

# homes

AWAY FROM HOME



# HILLSIDE'S Group homes

## Helping People Thrive in Your Community

Every year, our Impact Report explores a distinct aspect of Hillside's commitment to the communities we serve. In this edition, we're spotlighting a program that's very much a part of our communities.

Each of our 11 **group homes** was once a single-family residence on a typical suburban street. Now, they're home to a small number of individuals whose intellectual and developmental challenges make that setting the right place for them to live, grow and thrive.

With care provided by Hillside's staff on the **Developmental Opportunities Services** team—and with steady visits and input from their caring and attentive families—these individuals receive structure and guidance that make a critical difference in their lives. Wonderful things happen every day in these homes, and it's a pleasure to share a glimpse of that activity with you.

This program's progress is just one example of our extraordinary achievements in 2025—and as always, your support made so much of these accomplishments possible. On behalf of the entire Hillside community, thank you for your commitment to our mission. Today and every day, your generosity keeps Hillside strong.

**On the Cover:** Individuals and staff gather at Hillside's IRA group home in Macedon, NY.



*Maria Cristalli*

Maria Cristalli  
President and CEO



*James C. Haefner*

James C. Haefner  
Chair, Board of Governors



Homes Away from Home . . . . .	2
Chair's Award Winner: Jerry Ippolito . . . . .	6
Hillside at a Glance . . . . .	8
Regional Profiles . . . . .	10
Thank You, Donors . . . . .	12
Year in Review . . . . .	18
Financial Performance . . . . .	22
Leadership & Advisors . . . . .	24

# homes AWAY FROM HOME

At Hillside's IRA group homes, supportive long-term care makes a life-changing difference



Beth Rapke visits her son Taylor at Hillside's IRA group home in Macedon, NY. Since 1999, Hillside's Developmental Opportunities Services team members have been providing individualized long-term care for young people and adults with intellectual and developmental disabilities.

From early on, **Taylor Rapke**, one of three fraternal triplets, showed signs of unique challenges. "We could see differences between him and his siblings," recalls his mother, **Beth Rapke**. "He was around 2 when he was diagnosed with autistic disorder."

Supportive programs and special education classes allowed him to grow up at home with his family, but four years ago, the need had become clear for a specialized environment where the 18-year-old could continue to live safely. After careful consideration, his mom found the support Taylor needed: "We knew Hillside had great services, and we thought this would be a perfect setting to look into."

Taylor moved to Macedon, NY, joining four other young men in an Individualized Residential Alternative (IRA) group home, supported by staff from Hillside's Developmental Opportunities Services team. Hillside operates 11 group homes in neighborhoods throughout Western New York and Greater Rochester; once single-family houses, the IRAs provide a home environment for people with intellectual and/or developmental disabilities (I/DD), plus a mental health diagnosis.



Residents in the DO Services program are often in their late teens and early 20s, and it's not uncommon for some individuals to be in their 30s. "Our program is an important part of Hillside's commitment to provide care and support for youth, adults and families," says **Marsha Whitley**, the program's Executive Director.

Unlike the intensive residential treatment services provided to youth at Hillside's four residential campuses, services at the group homes are understood to be long-term and provided in a relaxed, homelike environment. "For the people who live here, this is home. This is a family, away from their family," says **Shamia Nicholson**, a supervisor at Taylor's IRA. "We're here to help them live their lives and become the people they're meant to be."

"It's a lovely, lovely setting," says Beth Rapke. "I feel so at ease knowing that my son lives in a place where he has people that care about him like his family does."

## 'An Amazing Journey'

Residents' lives in the IRAs follow individualized paths. Those young enough attend school;





**Left:** A ribbon-cutting ceremony in October 2025 celebrated the opening of a group home, in Greece, NY. As the need continues to grow strong for community-based IRAs, Hillside remains committed to providing these essential services for individuals and families.

**Bottom Right:** Taylor Rapke with Hillside's Shamia Nicholson at the Macedon, NY, group home where Taylor lives with four other young men.

later, every effort is made to connect them with structured day programs that provide additional opportunities for social growth and learning. At home, the DO Services staff work with them on building life skills that support long-term goals.

Since Taylor came to Macedon, he's improved his abilities in a variety of areas including showering, laundry and preparing meals. "With a verbal prompt or just asking him, he's doing that now," Nicholson says. "It's wonderful to feel like we're giving that support to him and the other guys. It could seem so simple to everybody else, but to them it means everything."

"It's been an amazing journey for him," Beth Rapke says of her son. "Anybody who has a developmental disability naturally has a different timetable for approaching a problem or learning a skill. The beauty of his being here at Hillside is that staff can assess that, and break down the tasks as appropriate for each person in the house. They support their needs, and help them move forward at their own pace."

Recreation and group activities vary at the different sites. Last summer, Hillside staff and families at a group home in the town of Webster enjoyed jerk chicken at a barbeque dinner; over in the Buffalo suburb of Orchard Park, an ice cream social was held for residents of that IRA and others in the area. The ice cream social is an annual tradition—a recurring gift from the parents of a young woman who formerly lived in the Orchard Park IRA.

Taylor's life in Macedon has plenty of room for his mom. Beth Rapke joins him for weekly video chats, and both she and Taylor's dad make regular in-person visits that mix routine with welcome surprises. "No two days are alike going out with Taylor, but that's fun and joyful and exciting," she says. "And even though his expressive communication can be limited at times, you can feel the love between us."

## Learning and Growth

The need continues to increase for services supporting the I/DD community, and Hillside

is taking strategic steps to expand its group home network. The agency's latest IRA, in the Rochester suburb of Greece, opened in late 2025 following an open house and ribbon-cutting event in October where funding and regulatory partners joined neighbors from the block: "It's important to us that we be a part of the communities that we're in," Whitley says.

Taylor's mom connects regularly with the IRA staff about her son's progress—and she's excited for his future. "For me, the joy in motherhood is seeing my kids learn and grow and become a functioning adult someday, whatever that means to them. In Taylor's case, with the support of staff at Hillside, he's learned many skills that make me as a mom very proud. It's a beautiful thing."



To watch the *Stories of Hillside* video featuring Taylor and Beth Rapke, scan this QR code or visit [Hillside.com/taylor](https://Hillside.com/taylor).

## FAST FACTS

### Developmental Opportunities Services

#### When did the program begin?

Hillside's first group home opened in 1999.

#### How many group homes are there?

Hillside operates 11 IRAs in Monroe, Wayne and Erie counties; the newest, in Greece, NY, opened in late 2025. Typically, five to six individuals live in each home.

#### Who's served by the program?

Young people can be placed at a Hillside IRA at 12 to 25 years of age, with many remaining for years after that. They must be diagnosed with an intellectual or developmental disability and a mental health condition.

#### Where are they from?

Families with individuals in the DO Services program may come from Allegany, Cattaraugus, Chautauqua, Chemung, Erie, Genesee, Livingston, Monroe, Niagara, Ontario, Orleans, Schuyler, Seneca, Steuben, Wayne, Wyoming and Yates counties.

#### Who funds DO services?

The program is funded by the New York State Office for People with Developmental Disabilities, with philanthropic giving providing additional critical support.



# Jerry Ippolito

2025 CHAIR'S  
AWARD HONOREE

"Even if we affect one kid's life,  
we win"

*Each year, Hillside's Impact Report includes a profile of the recipient of that year's Chair's Award, earned by an employee whose above-and-beyond service exemplifies our mission.*

When he was recognized at the Hillside Annual Meeting in May, 2025 Chair's Award honoree **Gerard "Jerry" Ippolito** used his remarks to accept the award on behalf of all of Hillside—program and support staff, donors, public and private community partners, and especially the youth, adults and families served every day by the agency.



*Jim Haefner (right), Chair of Hillside's Board of Governors, presented Jerry Ippolito with the Chair's Award at Hillside's 188th Annual Meeting in May 2025.*



*Jerry Ippolito celebrates his Chair's Award honor with his team members at the Annual Meeting.*

That mindset of inclusiveness and team spirit is indicative of the qualities that earned Jerry this year's honor. A 15-year Hillside veteran, the Director of Property, Food Services and Safety & Security is known as a solution-oriented leader and contributor who approaches challenges with enthusiasm and creativity.

"He's an instrumental part of what we do," said **Christopher Peterson**, Chief Financial Officer, who nominated Jerry for the 2025 award. "He does what's needed to solve a problem, and he's equally comfortable engaging with youth and families, Board members, donors and strategic partners. Even when it comes to our critical vendors, he works to make sure they feel a connection back to Hillside."

Since joining Hillside in 2010 to lead the Environmental Services team, Jerry has increased the scope of his responsibilities to include everything from emergency management to nutrition services. Through it all, he says, he's driven by the opportunity to help those in need—even by things as simple and meaningful as addressing youth concerns about hard mattresses in a residential campus

unit, or asking about an individual's favorite color when the time comes to paint the walls of their room at a group home.

"That's what keeps me here," he says. "Where else could you be a part of all that progress for so many kids who need us?"

In recent years Jerry's evolving portfolio has grown even further, as he and his team volunteered to take over logistics and planning for two of Hillside's biggest fund-raising events: the Special Santa toy-and-gift drive and the annual Hillside Golf Tournament. "There's a lot to juggle, but it's definitely not a job. It's more than that. It's a passion. It's about helping these kids out. Even if we affect one kid's life, we win.

"We all choose to be here," he adds. "Not everybody gets to do this."



To watch a video tribute to Jerry Ippolito that was screened during the presentation of his award at the 2025 Annual Meeting, scan this QR code or visit [Hillside.com](https://www.hillside.com).

# HILLSIDE AT A glance

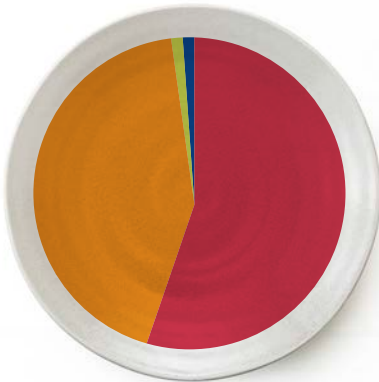
## Those We Serve

DEMOGRAPHICS | Fiscal Year 2025



AGE

- 12% Birth-10 Years
- 58% 11-18 Years
- 11% 19-26 Years
- 19% 27+ Years
- <1% Not Listed



GENDER

- 56% Female
- 43% Male
- <1% Non-Binary
- <1% Not Listed

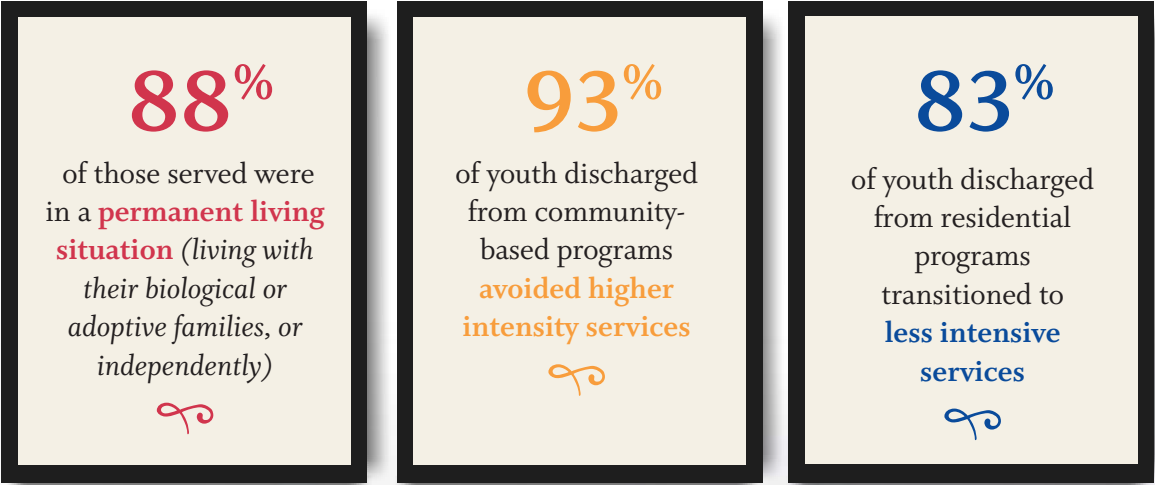


RACE & ETHNICITY

- 29% Black / African American
- 27% White
- 12% Hispanic / Latino
- 7% Multi-Racial
- 1% Asian/Pacific Islander
- <1% American Indian or Alaskan Native
- 23% Not Listed

## YOUTH AND FAMILY OUTCOMES | Fiscal Year 2025

At the times of leaving select Hillside programs:



Based on surveys conducted with those served by Hillside:



REGIONAL

profiles

3,683

TOTAL FAMILIES SERVED IN THE MONROE REGION\*

Monroe, Ontario, Seneca, Wayne and Yates counties

- 950+ Employees
  - 3 Day Treatment Sites
  - 6 Individual Residential Alternative (IRA) Group Homes (39 beds)
  - 2 Residential Campuses:
    - Crestwood Campus in Chili (34 beds)
    - Monroe Campus in Rochester (100 beds)
  - 17 HWSC Sites in Monroe County Schools
  - 1 Community-Based Team Office

Families Served, by Service

- 451 Care Management for Adults\*\*
- 185 Care Management for Children\*\*
- 423 Day Treatment Education
- 44 Developmental Disabilities
- 125 Early Childhood Development
- 99 Foster Care
- 324 Home- and Community-Based Services
- 315 Permanency Services
- 334 Preventive Services
- 312 Residential Treatment
- 95 Youth and Family Peer Support
- 1,329 Youth Development



1,184

TOTAL FAMILIES SERVED IN THE WESTERN REGION\*

Erie, Genesee, Livingston, Niagara, Orleans and Wyoming counties

- 145+ Employees
  - 3 Community-Based Team Offices
  - 4 Individual Residential Alternative Group Homes (25 beds)

Families Served, by Service

- 251 Care Management for Adults\*\*
- 388 Care Management for Children\*\*
- 25 Developmental Disabilities
- 129 Foster Care
- 160 Home- and Community-Based Services
- 48 Permanency Services
- 127 Preventive Services
- 184 Youth and Family Peer Support
- 36 Youth Development

454

TOTAL FAMILIES SERVED IN THE SOUTHERN TIER REGION\*

Chautauqua, Cattaraugus, Allegany, Steuben, Chemung and Schuyler counties

- 115 Employees
  - 1 Residential Campus: Snell Farm in Bath (28 beds)
  - 3 Community-Based Offices

Families Served, by Service

- 74 Care Management for Adults\*\*
- 171 Care Management for Children\*\*
- 26 Foster Care
- 79 Home- and Community-Based Services
- 89 Preventive Services
- 58 Residential Treatment
- 24 Youth and Family Peer Support
- 15 Youth Development

400

TOTAL FAMILIES SERVED IN PRINCE GEORGE'S COUNTY, MARYLAND

- 10+ Employees
  - 7 HWSC Sites in the Prince George's County Public School District

Families Served, by Service

- 400 Youth Development

\*Totals are less than the sum of all service numbers because many youth, individuals, and families are enrolled in multiple programs.  
\*\*Care Management only includes clients actively enrolled.

3,063

TOTAL FAMILIES SERVED IN THE CENTRAL REGION\*

Broome, Cayuga, Chenango, Cortland, Herkimer, Jefferson, Lewis, Oneida, Onondaga, Oswego, Madison, St. Lawrence, Tioga and Tompkins counties

- 335 + Employees
  - 3 Community-Based Team Offices
  - 1 Day Treatment Site
  - 1 Residential Campus: Finger Lakes Campus in Auburn (58 beds)
  - 11 HWSC Sites in the Syracuse City School District
  - 3 HWSC Sites in the Utica City School District
  - 1 HWSC Site in the Binghamton City School District

Families Served, by Service

- 352 Care Management for Adults\*\*
- 554 Care Management for Children\*\*
- 39 Day Treatment Education
- 55 Foster Care
- 117 Home- and Community-Based Services
- 107 Permanency Services
- 83 Preventive Services
- 100 Residential Treatment
- 41 Youth and Family Peer Support
- 1,722 Youth Development

# THANK YOU

# donors!

The following list reflects donors who made gifts to Hillside between July 1, 2024 and June 30, 2025. Your generosity directly supports our mission to help vulnerable youth, adults and families overcome their challenges and achieve the stronger futures they deserve. **Your donations make a profound impact in countless lives, every day.**

*Although we have strived to appropriately recognize our 2025 donors in these pages, we hope you will report any errors to the Hillside Foundation at (585) 256-7515 or hcf@hillside.com to ensure the accuracy of future acknowledgments.*

## \$1,000,000+

B. Thomas Golisano

## \$100,000+

Dave Thomas Foundation for Adoption  
The Charles Fund, Inc.  
The Davenport-Hatch Foundation, Inc.  
United Way of Greater Rochester  
and the Finger Lakes

## \$50,000+

Anonymous  
KeyBank  
KeyBank Foundation  
Rochester Area Community Foundation  
The Bonadio Group  
William & Sheila Konar Foundation

## \$25,000+

Daisy Marquis Jones Foundation  
Marion Maracle Trust  
The Morris & Gwendolyn Cafritz Foundation  
John Morrison  
Paychex  
Paychex Charitable Foundation, Inc.  
Upstate Pharmacy, Ltd.

## \$10,000+

Anonymous  
Jim & Juli Boeheim Foundation  
Nancy L. Castro, EdD  
Helen Clark  
Community Foundation for Greater Buffalo  
Maria Cristalli  
ESL Federal Credit Union  
The Edward & Verna Gerbic Family Foundation  
John B. Gibson, Jr.  
James and Susan Haefner



Victoria G. Hines  
LeChase Construction Services, LLC  
The M&T Charitable Foundation  
Micron Technology  
Liz Nolan & Fred Zolna  
Christopher R. Peterson  
Phi Kappa Psi NY Theta Chapter &  
Zeta Tau Alpha Iota Psi Chapter  
Dawn Rice & John Blanding  
Efrain and Michele Rivera  
Bob and Gayle Stiles  
David Webb Foundation  
Eric Zeller

## \$5,000+

Anonymous  
Calista & Richard Amering  
BPAS Actuarial & Pension Services  
Community Financial Systems, Inc  
Constellation Energy Group Foundation  
Donald Dear, Jr. & Christine Dear  
Christopher Eckert, CPA & Gretchen Eckert  
EMCOR Services Betlem  
Excellus BlueCross BlueShield  
Philip & Marcia Fishbach  
Florence M. Muller Foundation  
JK Executive Strategies  
Jill Knittel  
Zalie & Bob Linn  
Mary S. Mulligan Charitable Trust,  
Bank of America, N.A., Tr  
Gerard Norton  
Susan B. Price  
Mark Rengert  
Rochester Female Charitable Society  
The Rodney B. Janes Memorial Trust  
Nancy Sands  
Mazie & Lawrence Tai  
Robert Tait  
WTW

## \$2,500+

Anonymous (2)  
Agape Physical Therapy Services, P.C.  
Bank of New York Mellon

Benchmark Realty Advisors  
Charles Breidenstein  
Jim Burns  
Charles J. & Burton S. August Family Foundation  
Canandaigua National Bank & Trust  
CPL Architecture, Engineering, Planning  
Dimick Foundation  
Richard & Alecia Dougherty  
Enterprise Holdings Foundation  
Sherman Farnham, Jr. & Anne Farnham  
Richard H. Feldman, PhD & Andrea Feldman  
Roger & Carolyn Friedlander  
David & Patricia Gardner  
Melissa & Brett Gardner  
Roderick & Stacey Green  
Brigitte Gueldenpfennig  
Harris Beach Murtha PLLC  
Marc & Roberta Johnson  
Kamp Zizzi, Inc  
Hon. Joan Kohout  
MAJ Contracting  
Karen & Mark McDermott  
Ann & Brian Montgomery  
Uniting Wealth Partners  
Darlene & James Ryan  
Ryan Plumbing & Heating  
Michael F. Stapleton, Jr.  
The Gifford Foundation  
John Thompson  
William and Donna Torpey  
Withum

## \$1,000+

Anonymous (3)  
James Adams  
Paul Adams  
Susan Alexander  
American Food and Vending  
Ginny Biesiada O'Neill & Tom O'Neill  
Pam & John Bradley  
Brian Bratta  
Natalie Burch  
CASCO Security Systems  
David Coddling  
Clyde & Karen Comstock

Barbara Conradt  
 Cornerstone  
 Ann & Jerry Cott  
 Thomas & Claire Crilly  
 CRISP Rochester  
 Caroline A. Critchlow, EdD  
 Crosby-Brownlie, Inc.  
 Amy Crossed  
 Ralph Dandrea  
 Mark DiFelice  
 Joseph Domicello  
 Nick Domicello  
 Donald F & Maxine B Davison Foundation  
 Elmer W. Davis, Inc.  
 EY, Syracuse  
 John & Margaret Feldmeier  
 Devon and Brittany Ferris  
 Fidelity Charitable  
 Flower City Glass  
 John & Bonnie Geraghty  
 Gleason Works Foundation, Inc.  
 Goodman Glass and Mirror Inc  
 Mark Greenstein  
 Heidi Schult Gregory  
 Erin Hiller  
 Beth Holliday  
 Jettison Real Estate  
 Jolly Roc LLC  
 Mike & Kathy Kirwan  
 Anne & Brad Komanecy  
 Dr. Gerald & Liisa LaMarsh  
 Lawley Insurance  
 Katherine Littlefield  
 M&T Bank  
 Deborah & Robert Maggs  
 Dennis Maguire  
 Jeffrey & Linda Mapstone  
 Mary Ellen Ash Clark Memorial Fund  
 Thomas & Judith McDermott  
 Medtronic  
 Milton Rents  
 Duncan Moore, PhD & Gunta Lidars  
 National Philanthropic Trust  
 Nashvilles  
 Debbie Olson

OneDigital Financial Services  
 Mike & Kelly Poliszuk  
 Scott Powell  
 Profeta Painting  
 Radec Electric Corporation  
 Reliant Credit Union  
 Dr. Christopher Richardson  
 & Dr. Yanick Vibert  
 River Valley Holdings  
 Robert C. and Mary K. Horton Fund  
 Rochester Paint Center  
 Hon. William Ryan  
 Saint Charles-Saint Ann's Food Pantry  
 Schwab Charitable Fund  
 SCN Hospitality  
 Security Mutual Life Insurance Company  
 of New York  
 SRC, Inc.  
 Jonathan Stadin  
 The Steam Police LLC  
 SWBR Architects & Engineers, P.C.  
 T.M. and M.W. Crandall Foundation A  
 Tallavera Medical Staffing  
 The Richard M. Schulze Family Foundation  
 Toshiba Business Solutions  
 United Way of Greater Milwaukee  
 John & Dinah Weisberg  
 Willow Street Foundation  
 Dr. Joseph & Elise Wojciechowski

### Every Gift Makes a Difference!

In addition to the donors listed above, we deeply appreciate the community of **1,070** Hillside donors who each gifted up to **\$999** during our 2025 fiscal year, for a collective impact of **\$157,200**.



## Golisano Campus at Crestwood

### A New Name, and a Renewed Vision for a Hillside Campus

On August 26, 2025, Hillside's innovative vision for one of our four residential campuses took a big step forward—as did our recognition of a transformative gift that's helping to make that vision a reality.

In a ceremony attended by elected officials, donors and community partners, youth and families, and staff and agency leadership, Hillside officially renamed our Crestwood Campus to honor a \$5 million donation by entrepreneur and philanthropist **B. Thomas Golisano**.

The new campus name, **Golisano Campus at Crestwood**, “honors the deep and enduring commitment of Mr. Golisano and the Golisano Foundation to Hillside and the children and communities we serve, that will literally change lives,” said Hillside President & CEO **Maria Cristalli**.

The ceremony also launched a three-year, \$7 million **Transformation and Modernization Project** at the campus that will bring new and renovated cottages, enhanced green space for stronger therapeutic recreation opportunities, and a host of other improvements that are research-proven to increase the level of care provided.

Other lead supporters of the three-year project acknowledged at the ceremony include **The Davenport-Hatch Foundation, The Charles Fund, The August Family Foundation, Liz August, The Bonadio Group, Reliant Federal Credit Union, The Mendick Foundation** and **The Muller Foundation**.



The August 26 event celebrated twin milestones: a shovel ceremony (top) that formally launched a three-year transformation and modernization project at Hillside's Chili, NY campus; and the renaming of that site (bottom) to honor the extraordinary generosity of B. Thomas Golisano.

# PINNACLE Society

Our Pinnacle Society honors those individuals and families who have informed us of their planned gifts to Hillside. These acts of generosity create a lasting legacy that helps to ensure Hillside’s partnerships with youth and families for generations to come.

*If you have included Hillside in your estate planning and you are not mentioned in this isting, please contact the Foundation at [hcf@hillside.com](mailto:hcf@hillside.com) or (585) 256-7515 so we may properly acknowledge your support.*

- Anonymous (15)
- Richard J.\* & Elizabeth J. Alexander\*
- Ross Anderson\*
- Burton S. August°\*
- Jan. L. August
- Robert & Amy August
- Diane C. Bahr
- Rachel Baker
- John\* & Jeanne Barry\*
- Bruce B. Bates°\*
- Geraldine Biddle Moore
- David C. Bills
- Mrs. William H. Bly\*
- Beverly Bowen\*
- Susan F. Buse°
- Paul R. Callaway\*
- Betsy & John Carver
- John & Diane Caselli
- Nancy L. Castro, EdD
- Ernestine White Murray Chandler\*
- Derek\* & Janice Chapman\*
- Sarah S. Clapp\*
- David L. Cleary\*
- Clyde & Karen Comstock°
- Barbara J. Conradt
- Amy L. Cosgrove\*
- Lawrence Crawford

- Maria E. Cristalli
- Frances M. Dalbey\*
- Richard H.\* & Virginia C. Eisenhart°\*
- James S. Ely, Jr.\* & Michele Ely\*
- Anne M. & Sherman Farnham
- Harold S.\* & Joan Feinbloom°
- Margaret Cass Ferber
- Philip & Marcia Fishbach
- Jack & Suzy Fitzgerald
- Jonathan D. Foster
- Louise S. Geiser\*
- Fred H. Gordon, Jr.\*
- Georgia P. Gosnell\*
- in remembrance of Kate Louise Trahey
- Henrietta S. Hammond\*
- Richard L. & Marilyn Hare\*
- Barbara H. Hargrave°\*
- Ann Hayslip
- Preston Henderson
- A. Thomas Hildebrandt
- Austin E. Hildebrandt\*
- J. Lawrence Hill, Jr \*
- Robert C. Horton\*
- Samuel T. Hubbard\*
- Alan\* & Elizabeth Illig°\*
- Robert M.\* & Ruth E. Johnson\*
- Francis D. Jung°\*
- Louise H. Klinke\*
- Dr. Gerald W. & Liisa LaMarsh
- Joy Landauer & Stephen Hoysic
- Harry H. Lang, Jr.°\*
- Fred Lawrence\*
- T.C. Lewis\*
- Zalie & Bob Linn
- Lawrence & Cynthia Lovejoy
- Arthur E. Lowenthal°\*
- Mary C. Lyon\*
- Katherine E. MacKerchar\*

- Nancy S. Mangan\*
- Jeff & Linda Mapstone
- Jeffrey Martin
- Myles McHale, Jr,° & Amy McHale
- Dr. Robert S. Menchel° & Carol D. Menchel\*
- Thelma D. Mertz\*
- Florence M. Muller°\*
- Ann Mowris Mulligan°\*
- Mary S. Mulligan\*
- T.S. Newell III\*
- Jenny C. Overeynder
- Margaret R. Paaschen\*
- Bruce\* & Charlotte Patt\*
- John & Dawn Piccirilli
- Angela B. Pichichero
- Patricia Prince°\*
- Carol Rees°\*
- Kathy P. & Dennis M. Richardson
- Mary Ann Ritzenthaler\*
- Troy & Torri Robinson
- Lucia R. Root\*
- Robert & Jeanne Sandholzer
- Janet S. Sarr°\*
- Elizabeth Schenk\*
- W. Winslow & Pamela Schrank
- Paula & Steven Smith
- Margaret E. Somerset°\*
- Jane W. Steinhausen°\*
- David J. & Karen Stoddard
- Kate Louise Trahey\*
- R. Marsden Tuthill\*
- Marjorie Van Demark\*
- David A. Vasile°
- Barbara Schmucker Whittemore
- John E. Wise

°Charter Member  
\*Deceased



## DONOR SPOTLIGHT

### Getting Dirty for a Good Cause

For 15 years, Rochester Institute of Technology students in the **Phi Kappa Psi** fraternity and the **Zeta Tau Alpha** sorority have maintained a tradition of supporting Hillside’s mission by designating our agency as their chosen charity.

Organized and run by the Phi Kappa Psi fraternity and Zeta Tau Alpha sorority, the very first **Mud Tug** happened in 1995. Now one of RIT’s largest student-run philanthropy events, the school-wide tug-of-war event has become a staple for RIT students, alumni, faculty and staff. That annual event raised \$10,350 to support Hillside programs during the 2025 fiscal year.

“Supporting Hillside isn’t just a tradition; it’s a special reminder that our efforts matter,” said Mud Tug XXIX Chair **Lauren Nichol**. “We can make a meaningful impact in the lives of those who need it and are grateful for the opportunity to work with this organization.”

Last year, the students visited our Golisano Campus at Crestwood to learn more about where their annual donation goes. During a tour of the campus, they toured the residential cottages and classrooms and chatted with staff to learn more about the needs of the youth we serve.

“They’re a great group of young people who have a strong connection to service before self,” said **Calista Amering**, Hillside Chief Advancement Officer.

# year IN REVIEW

## JANUARY 2025

The *Stories of Hillside* campaign continued with a video that spotlighted **Amanda Marie**, a Hillside Family Peer Advocate. *Stories of Hillside* continues to make an impact in social media, with new video stories released every quarter. To relive some of the past stories and see what's new, visit [Hillside.com/stories](https://Hillside.com/stories).



## FEBRUARY 2025

**Eric Sterling**, a teacher at the Andrews-Trahey School on Hillside's Monroe Campus, was honored in February with the coveted Golden Apple Award by Rochester's WROC-TV news team. The award salutes excellence in the region's teaching community. In accepting his award, Sterling thanked his students and colleagues for nominating him, and "for making Hillside such a great place to be."



## APRIL 2025

Our Rochester-based Family Opportunity Center held a **Family Strengthening Carnival** that was free and open to the public with all-ages activities. Peer organizations joined Hillside to provide crafts and games, face painting, farm animals from our Snell Farm Campus, and plenty of information about helpful services that can support family development and permanency.



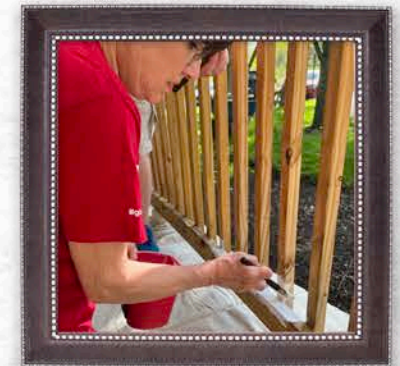
## MAY 2025

The Syracuse gymnasium of our Hillside Work-Scholarship Connection program was renamed to honor the **Jim and Juli Boeheim Foundation** for their longtime support of HWSC's impactful work with Syracuse youth. We're so grateful for the Boeheims' generosity, and for the full house of support from students and community partners, including Syracuse Mayor Ben Walsh.



## MAY 2025

Another spring season brought more Days of Caring! Volunteers from **LeChase Construction, Thermo Fisher Scientific, Excellus BlueCross BlueShield, MVP Health Care** and **First American Equipment Finance** rolled up their sleeves to volunteer at multiple Hillside locations. Many thanks to them, and to the United Way of Greater Rochester and the Finger Lakes for making these days possible.



## JUNE 2025

Our annual **Charity Golf Tournament** was a huge success—even a brief torrential downpour couldn't dampen the fun! We're so grateful to the many sponsors who made the day special, to each and every golfer who brought their 'competitive A-game, and to the many Hillside staff who pitched in. See you next year!



## JUNE 2025

**Camp Possibilities** kicked off the summer season with a ribbon-cutting ceremony, and indoor and outdoor activities for the youth in attendance. Hillside's day camp is exclusively funded by donors, and the ceremony recognized 2025 corporate sponsors KeyBank, Harris Beach Murtha, Freed Maxick, WTW Corporate and CPL; as well as our longtime supporters from the Rochester Female Charitable Society.



## JULY 2025

#HillsidePride was on display at **Pride Parades** in multiple regions this summer, including a big turnout of Hillside marchers at the Rochester parade, a July tradition. A staff committee collaborated on special themed T-shirts and giveaway items that helped Hillside show our support for the LGBTQ+ community.



## AUGUST 2025

Eleven-year-old **Markell Merrit** was honored at a ceremony on our Golisano Campus at Crestwood. When a driver collided with the Hillside van in which Markell was a passenger, the youth stayed calm and supported driver John Veaut in helping the other passengers escape safely from the damaged vehicle. “He’s a hero,” Veaut says of young Markell.



## SEPTEMBER 2025

Periodic open house events at our residential campuses allow Hillside’s community partners to learn more about our constantly evolving programs. In September it was the **Snell Farm Campus’** turn, with a day of presentations that showcased recent and ongoing activities that keep youth and staff busy all year.



## OCTOBER 2025

At our annual **Clinician Conference**, Hillside’s clinical professionals sharpen their skills and explore new ways to support the therapeutic needs of the youth and families we serve. The 2025 conference—held on World Mental Health Day—saw dozens of Hillside clinicians convene at the Golisano Institute for Business & Entrepreneurship.



## OCTOBER 2025

Our **Special Santa** toy-and-gift drive celebrated an extraordinary anniversary: 50 years of spreading holiday joy! An October kickoff event brought out our corporate sponsors and lead partners—including presenting sponsor KeyBank—and encouraged donors from all regions to participate, so thousands of young people served by Hillside would have a happier holiday season.



## NOVEMBER 2025

The launch of **Hillside’s Next Steps: Critical Time Transition Program** represents an exciting collaboration with the University of Rochester Medical Center and other regional hospitals. The program provides enhanced care management services for youth with complex needs, as well as transitional residential beds as needed, as they journey from hospital stays back to their homes and families. A second Hillside Next Steps program, in Erie County, is planned for 2026.



# financial

PERFORMANCE

Program Impact

JULY 1, 2024 THROUGH JUNE 30, 2025

8,622 TOTAL FAMILIES SERVED\*\*\*

SERVICES .....	REVENUES .....	FAMILIES SERVED .....
Care Management for Adults .....	\$2,534,796 .....	1,126*
Care Management for Children .....	\$7,001,900 .....	1,297*
Day Treatment Education .....	\$21,415,252 .....	462
Developmental Disabilities .....	\$14,293,919 .....	69
Early Childhood Development .....	\$274,368 .....	125
Foster Care .....	\$6,854,531 .....	299
Home- and Community-Based Services .....	\$4,699,541 .....	680
Permanency Services .....	\$2,546,280 .....	469
Preventive Services .....	\$4,779,261 .....	633
Residential Treatment .....	\$65,161,036 .....	460
Youth and Family Peer Support .....	\$1,189,957 .....	335
Youth Development .....	\$9,187,347 .....	3,505
<b>Total Services .....</b>	<b>\$139,938,186 .....</b>	
<b>Philanthropy and Other .....</b>	<b>\$8,388,029** .....</b>	
<b>Total Revenue .....</b>	<b>\$148,326,215 .....</b>	

\*Care Management only includes clients actively enrolled.  
\*\*Philanthropy and other revenues support services across regions above and beyond amounts presented.  
\*\*\*Totals are less than the sum of all service numbers because many youth, individuals, and families are enrolled in multiple programs.



Hillside Fiscal Year 2025 Report

Operating Report

YEAR ENDED JUNE 30, 2025

OPERATING REVENUES

Reimbursement from Government Agencies (fees for service) .....	\$140,163,761
United Way .....	\$586,947
Public Support .....	\$6,355,355
Other Revenue .....	\$1,220,152
<b>Total Operating Revenues .....</b>	<b>\$148,326,215</b>

OPERATING EXPENSES

Services .....	\$126,037,053
Management and General .....	\$16,046,173
Fundraising .....	\$876,933
<b>Total Operating Expenses .....</b>	<b>\$142,960,159</b>

Summarized Consolidated Balance Sheet

AT JUNE 30, 2025

Cash and Investments .....	\$61,005,239
Accounts Receivable .....	\$23,057,945
Property .....	\$30,181,955
Other .....	\$13,460,931
<b>Total Assets .....</b>	<b>\$127,706,070</b>
Liabilities .....	\$61,345,242
Net Assets .....	\$66,360,828
<b>Total Liabilities and Assets .....</b>	<b>\$127,706,070</b>



94%	Reimbursement from Government Agencies (fees for service)
<1%	United Way
4%	Public Support
1%	Other Revenue



88%	Services
11%	Management and General
1%	Fundraising

# leadership

## & ADVISORS

### Hillside Board of Governors

Our Board members provide essential governance and input, informed by years of experience in leadership and community advocacy. We deeply appreciate their dedicated service.

#### OFFICERS

James C. Haefner, *Chair*  
Caroline A. Critchlow, EdD, *Vice Chair*  
Christopher B. Eckert, *Treasurer*  
Anne L. Komanecky, *Secretary*  
Jill Knittel, *Past Chair*  
Maria E. Cristalli, *President & CEO*

#### GOVERNORS

Virginia Biesiada O'Neill  
Richard A. Dougherty  
Richard Feldman, PhD  
Melissa N. Gardner  
Jeremy Gersh  
Victoria G. Hines  
Karen W. McDermott, PhD  
Ann Montgomery  
Christopher J. Richardson, DO, MBA,  
FACOS, FACS  
Efrain Rivera  
Elizabeth P. Roaldsen  
Deborah Stamps, EdD, MBA, MS, RN, GNP,  
NE-BC, CDE®, FADLN, FAAN  
Michael F. Stapleton, Jr  
Carol Tegas

#### GOVERNORS EMERITI

Nancy L. Castro, EdD  
Roger B. Friedlander  
Monica L. Monte  
Robert B. Stiles

### Hillside Foundation Board of Trustees

#### OFFICERS

Michael F. Stapleton, Jr., *Chair and Treasurer*  
James C. Haefner, *Vice Chair*  
Maria E. Cristalli, *Secretary*

### Regional Advisory Councils

With Hillside's broad geographic reach, community-based perspectives are essential. Our Advisory Council members help us remain responsive to the diverse needs of the communities we serve.

#### PRINCE GEORGE'S COUNTY

Kirk Blackman  
Franklin Chambers, PhD  
Rev. Dr. Henry P. Davis III  
Ayana Douglas  
Kym Taylor  
Howard Stone, Jr, Advisor Emeritus

#### SYRACUSE

Dr. Reginald T. Braggs  
Jessica DesRosiers  
Maddie DiGristina  
Tim McDevitt  
Diana D. Jones  
Pamela Odom  
Virginia Biesiada O'Neill  
Jonathan Stadin  
Lindsey Weichert  
Robert Linn, Advisor Emeritus

### Agency Leadership

#### CHIEF EXECUTIVE TEAM

Maria E. Cristalli,  
*President & Chief Executive Officer*  
Calista Amering  
*Chief Advancement Officer*  
Elizabeth Nolan  
*Chief Operating Officer*  
Christopher Peterson  
*Chief Financial Officer*  
Darlene Ryan  
*Chief Performance Officer*  
Mazie Tai  
*Chief Human Resources Officer*

#### VICE PRESIDENTS & EXECUTIVE DIRECTORS

Ann Cott  
*Executive Director,  
Health Care & Integration Services*  
Dr. Grace Chitani Dengler  
*Vice President,  
Residential Treatment Services*  
Jean Galle  
*Vice President,  
Community-Based Services*  
Roderick Green  
*Executive Director,  
Hillside Work-Scholarship Connection*  
Colleen Hill  
*Executive Director, Education*  
Marsha Whitley  
*Executive Director,  
Developmental Opportunities Services*

### mission | WHAT WE DO

Hillside provides community-based services, education, and residential treatment to positively impact lives, in partnership with youth and families who have experienced trauma.

### vision | THE IMPACT OF OUR WORK

Youth and families overcoming challenges to heal and thrive in their communities.

### values | HOW WE APPROACH OUR WORK

**Caring:** Hillside builds a culture of trust and support by focusing on the wellness and resiliency of our staff, and the youth and families we serve.

**Inclusion:** Hillside believes all people should be accepted for who they are, have a voice, and be listened to and valued while striving for equity, trust, and belonging.

**Excellence:** Hillside utilizes high-quality, evidence-based/informed practices, seeks input from employees, and strives for continuous improvement in order to achieve the best possible results and outcomes.

### COMMITMENT TO DIVERSITY, EQUITY & INCLUSION

Hillside creates an inclusive environment where we leverage our diversity to build a strong, equitable community.

## How We Serve Our Communities

### Behavioral Health

Hillside's comprehensive behavioral health services address symptoms related to the complex medical, mental health, substance abuse or social needs of youth and adults.

### Crisis Support

Working closely with youth facing imminent risks and their families, Hillside offers connections to safe havens, counseling and life-skills training to help youth find pathways to a confident, hopeful future.

### Education and Vocation

Hillside works with families, community partners and school districts to provide individualized services that address broad challenges affecting learning, academic success and graduation.

### Family Resources

Through neighborhood- and home-based services, Hillside partners with families to ensure they have the life-enhancing resources to fulfill their potential as guardians, leaders and caregivers.

### Foster Care, Kinship & Adoption

Hillside's adoption and therapeutic foster care services connect youth and families with the stability and support needed to give youth the best opportunities for happy, healthy lives.

### In-Home and Community Support

From home-based support to juvenile-justice diversion programs, an array of services channel research-informed practices into the lives of the youth and families with whom we partner.

### Residential Treatment

For young people facing emotional, behavioral and social challenges, Hillside offers preventive and interventional care along with customized treatment that adapts to each youth's unique life situation.

For details about our programs, visit [Hillside.com](https://www.hillside.com).

[Hillside.com](https://www.hillside.com)

